

[Land Management in Time of Crisis]

Enhancing Land Management, Land Development and Construction



المؤتمر العربي  
الثاني للأراضي

Second Arab Land  
Conference

22-24 FEBRUARY 2021  
CAIRO, EGYPT

**Planning for Forced Displacement in Chronic  
Conflict Zones. A Settlement Approach (SA)  
for Temporary Humanitarian Camps in the  
Kurdistan Region of Iraq (KR-I).**

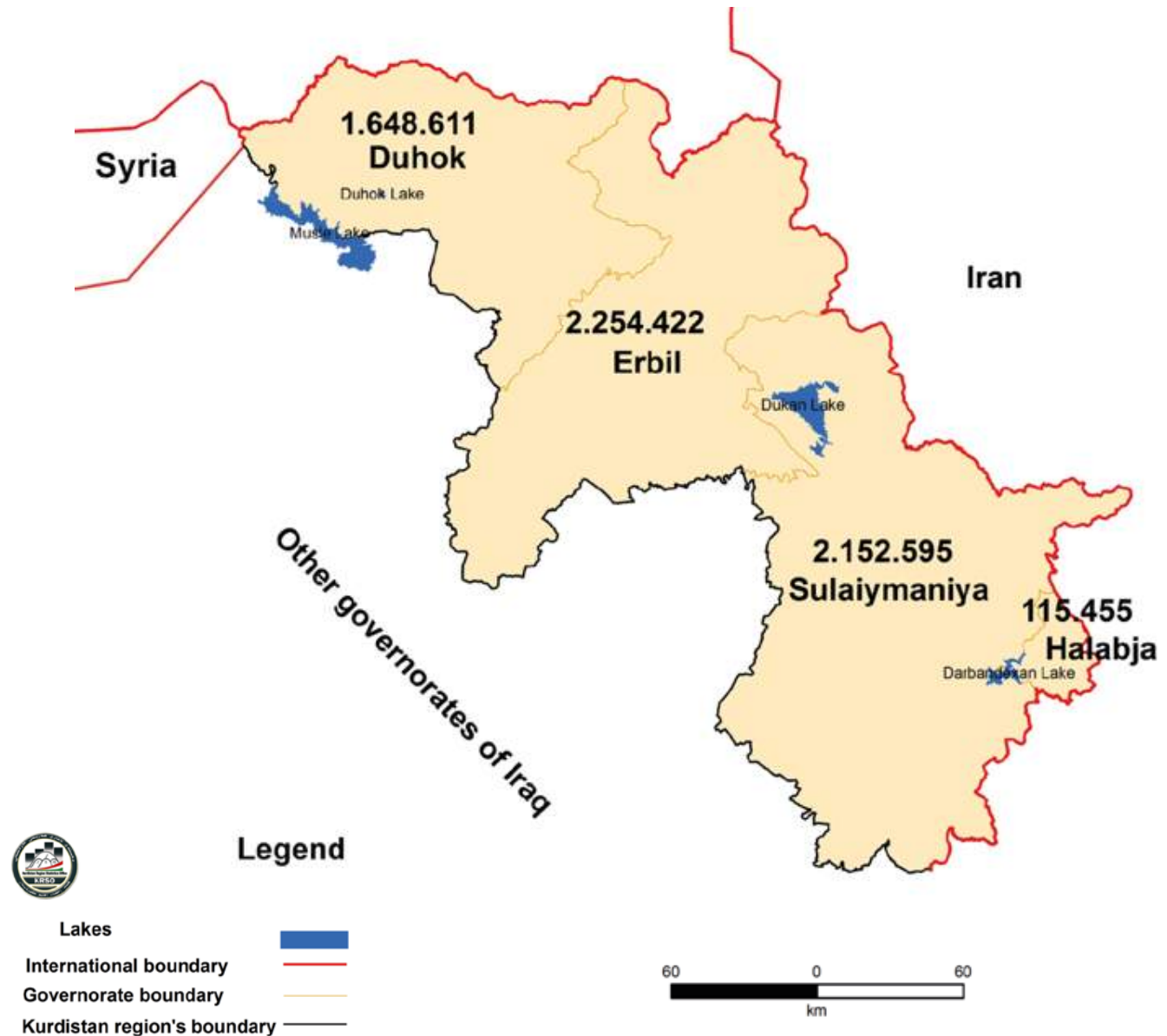
Layla Zibar

[Layla.zibar@b-tu.de](mailto:Layla.zibar@b-tu.de)

[Layla.zibar@kuleuven.be](mailto:Layla.zibar@kuleuven.be)

# Presentation Outline:

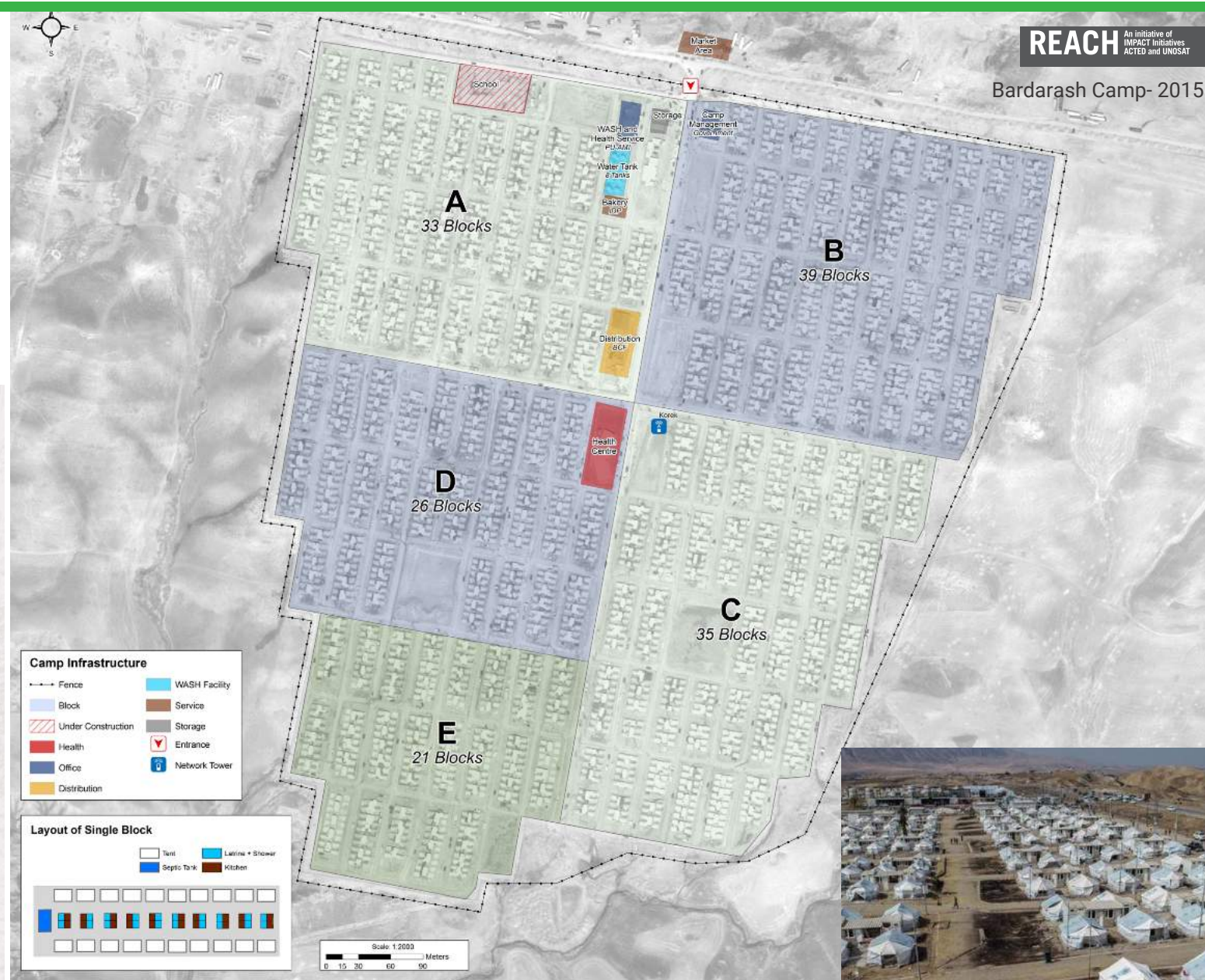
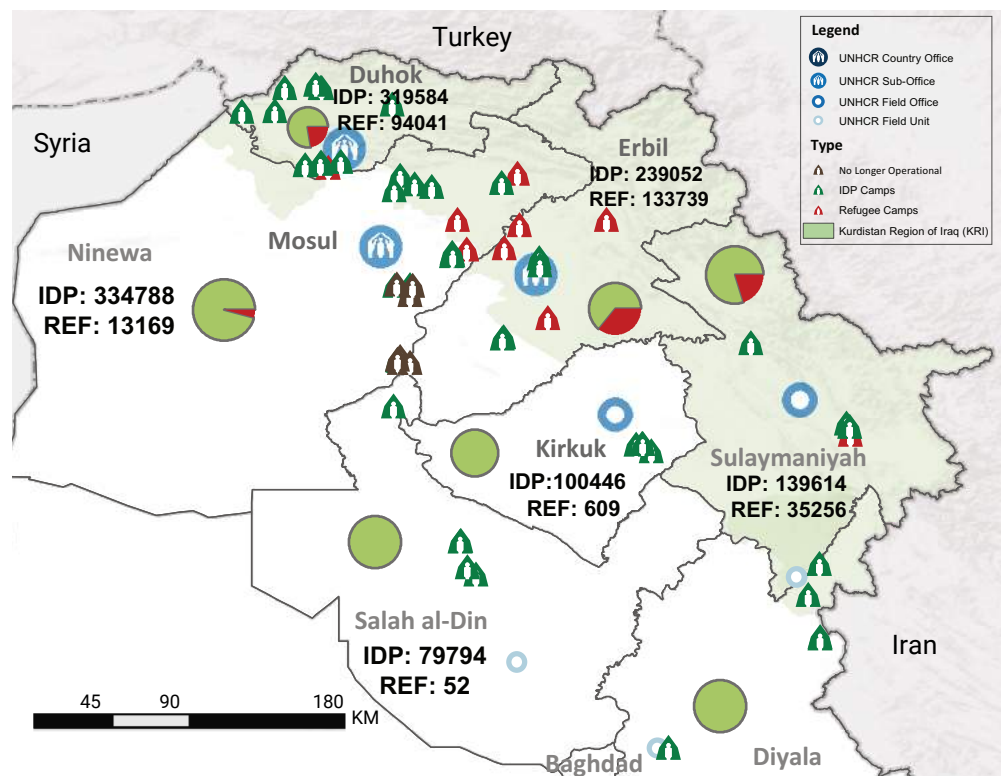
- Introduction
- Historical & Current Logics of the SA For Humanitarian Camps
- A Brief History of the Use of the SA for Forced Displacement in the KR-I (1958-2011).
- The Syrian Crisis and the Islamic State of Iraq and Levant (ISIL) - The SA Use for Humanitarian Camps (2011- )
- Conclusions and Main Remarks



# The Receiving Sites & Structures In A Prolonged

## Temporariness

‘Make ends meet’ until a ‘more suitable’ solution present itself ‘elsewhere’.





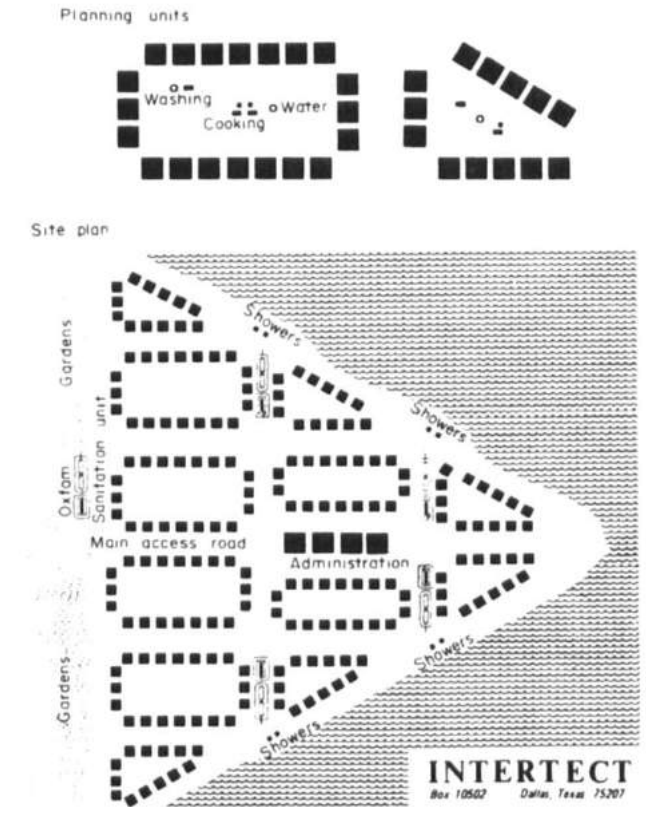
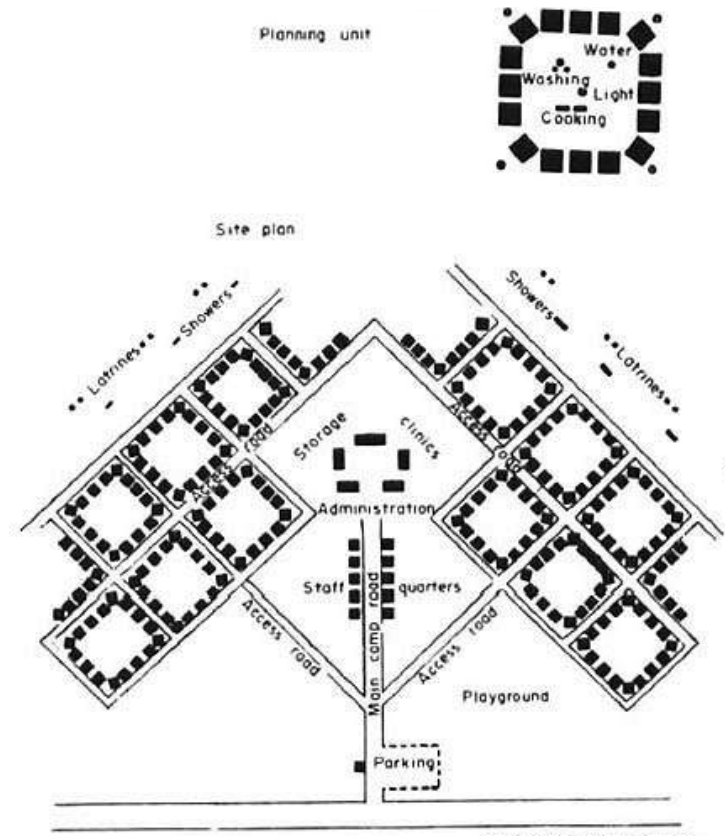
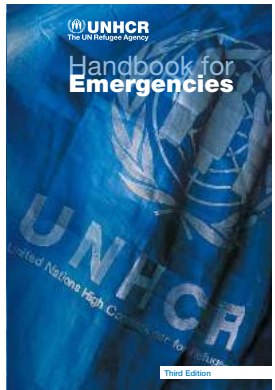
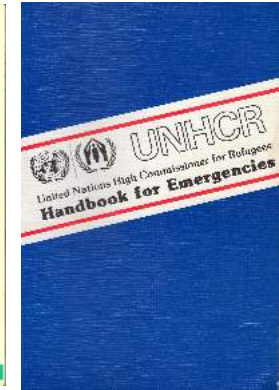
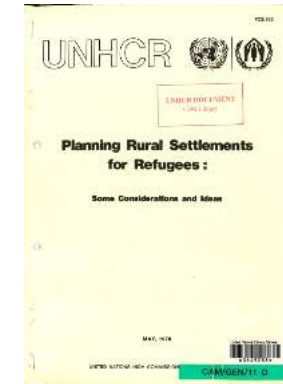
# The Settlement Approach For Humanitarian Camps

## Early Developments and Handbooks



Coyotepe camp, Nicaragua  
1972

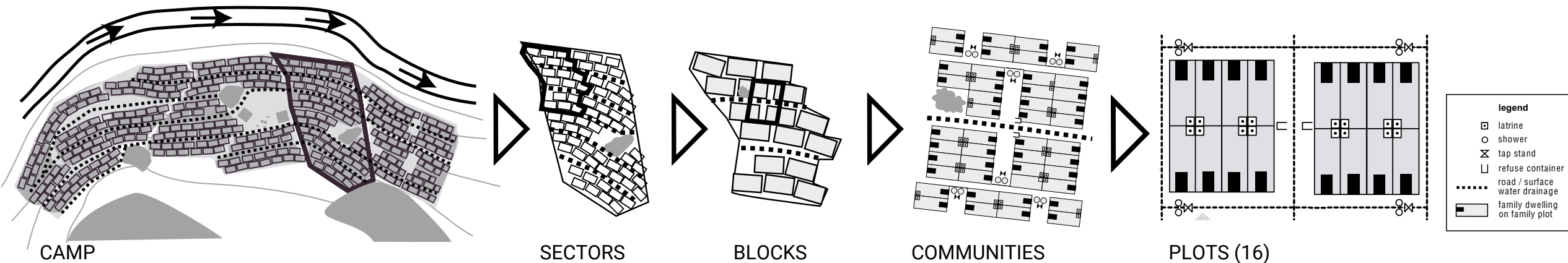
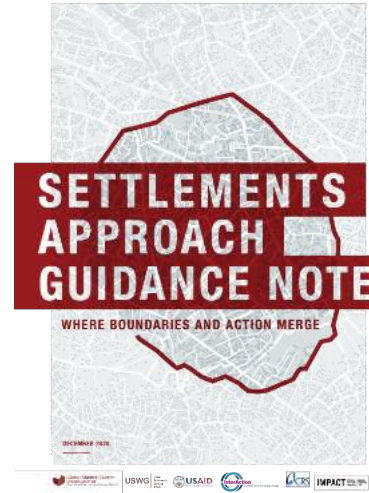
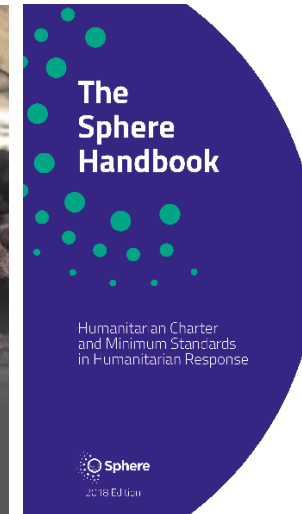
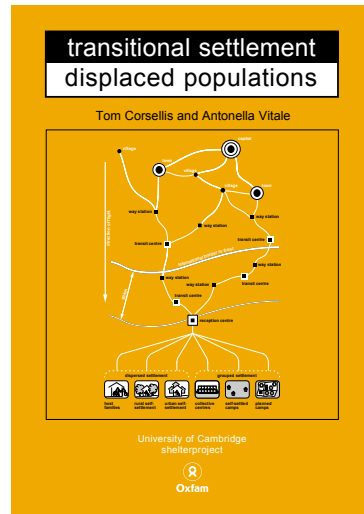
Fred Cuny - INTERTECT GROUP



## Historical & Current Logics of the SA For Humanitarian Camps

### A Machine to “operate” or a place to live the “temporary”?

- Physical Component
- Soft Component
- Operators/Dwellers

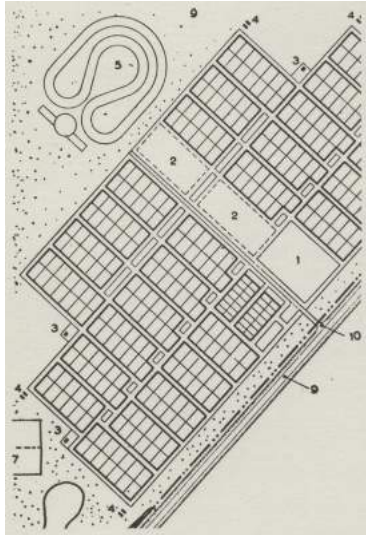




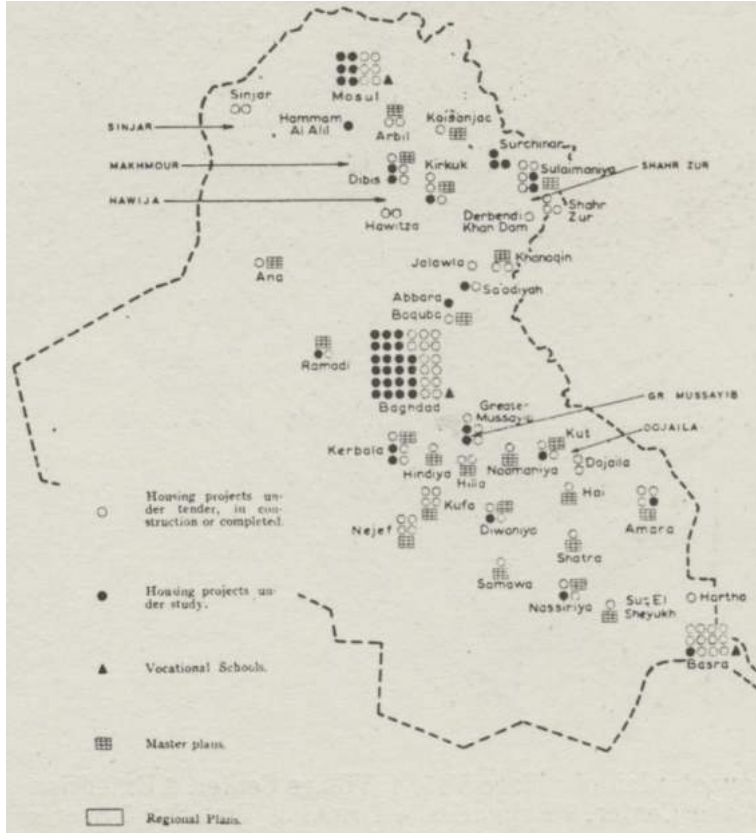
# Between Development, Rupture & Confinement

## Modern Villages

مجمعات عصرية (1970-1980)

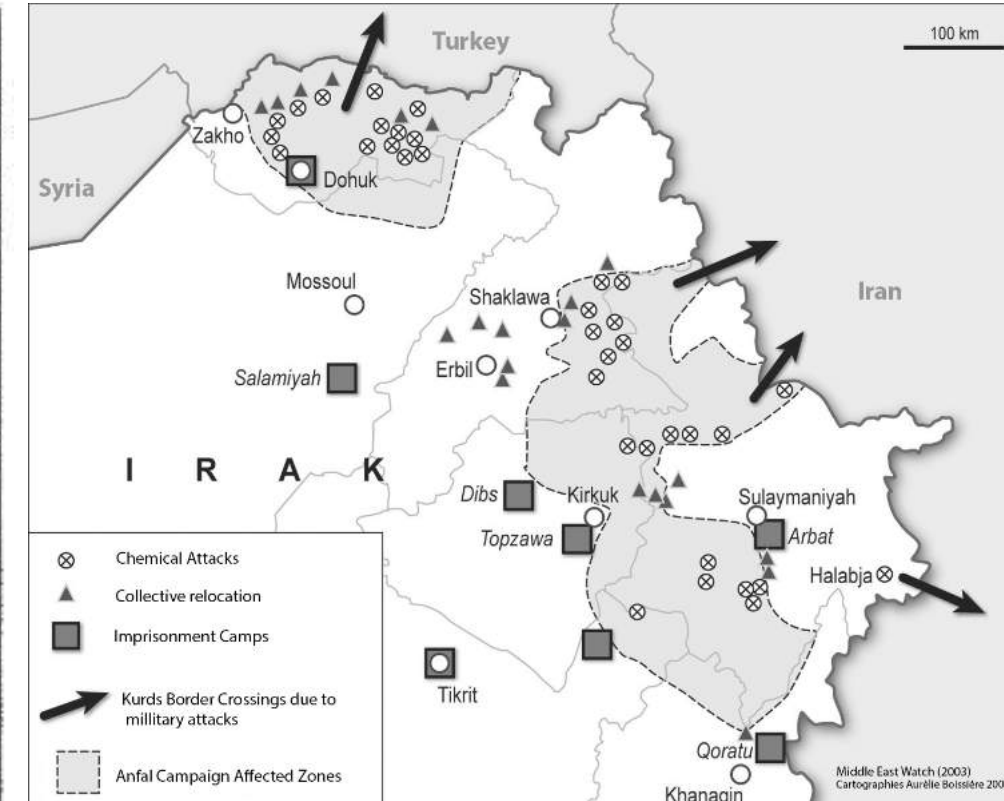


Housing activities in the national housing program of Iraq and generic layout for the town, developed by Doxiadis Associates (Doxiadis Associates & DBoGI, 1963)



## Coercive Villages / Complexes

مجمعات قسرية (1980-1991).



Left: Harir Collective Town – Courtesy to Harir Municipality in (Genat, 2017)

Right: The displacement in 1991 (Middle East Watch, 2007)



# The First Gulf War

## The Kurdish Exodus 1991





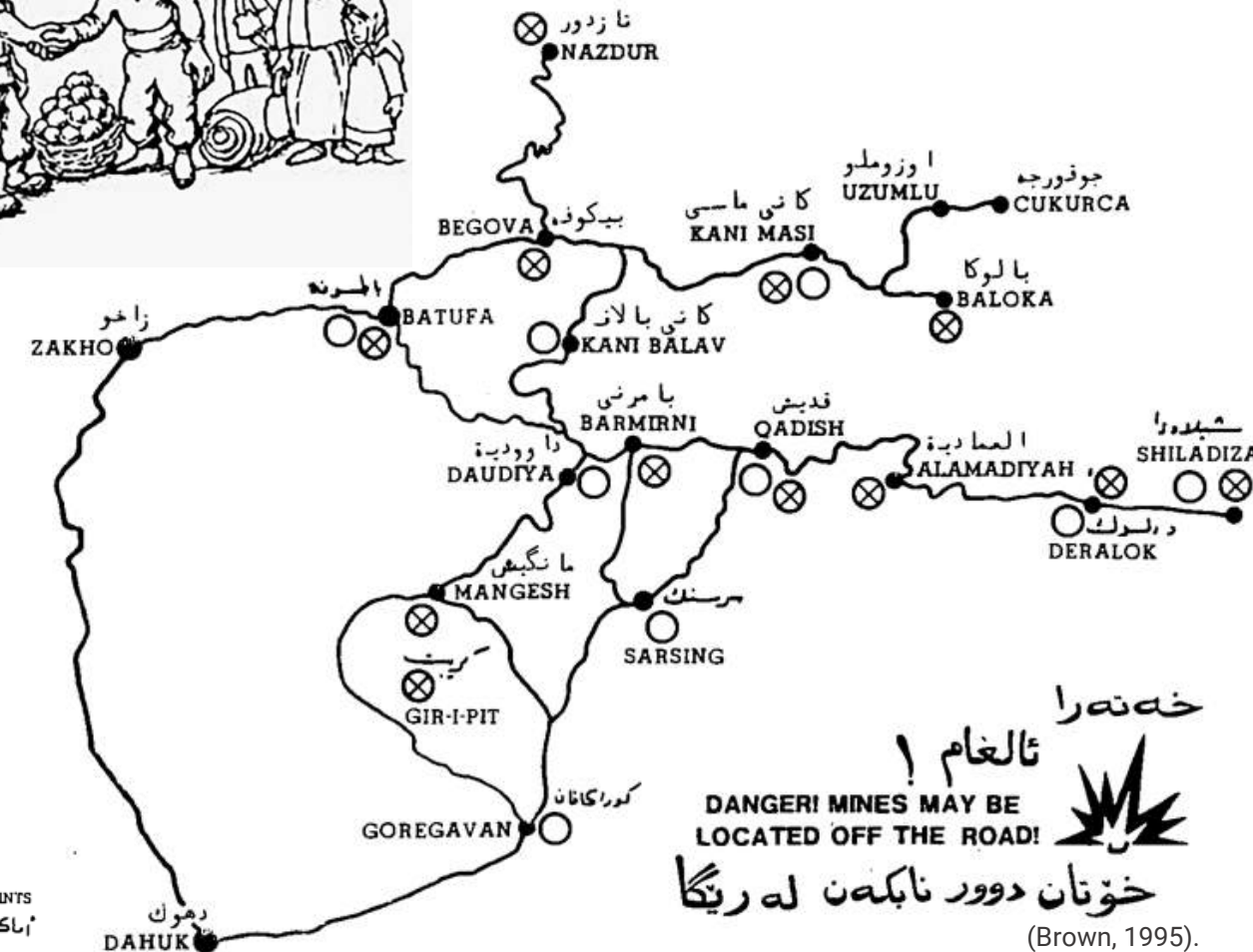
## A Brief History of the Use of the SA for Forced Displacement in KR-I

### KR-I as a No-Fly Zone

Operation Provide Comfort



(Institute Kurde De Paris, 1992)

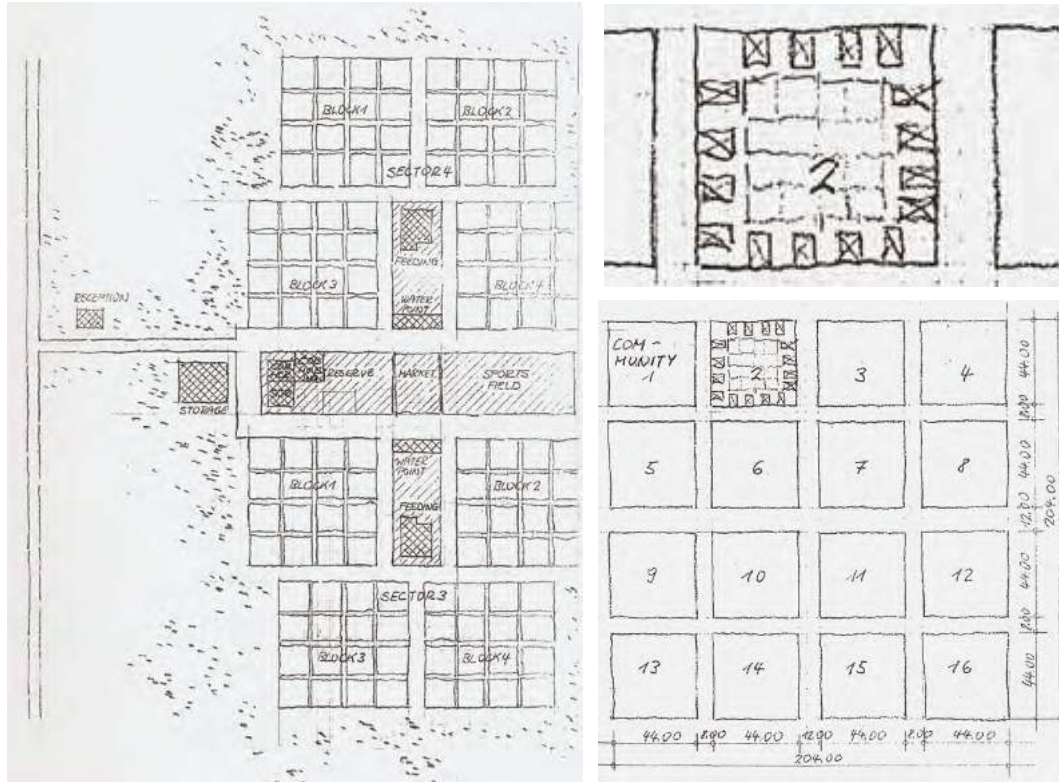


(Brown, 1995).



# Relief Camps, Resettlement & Rehabilitation (1991-1995)

Operation Encourage Hope



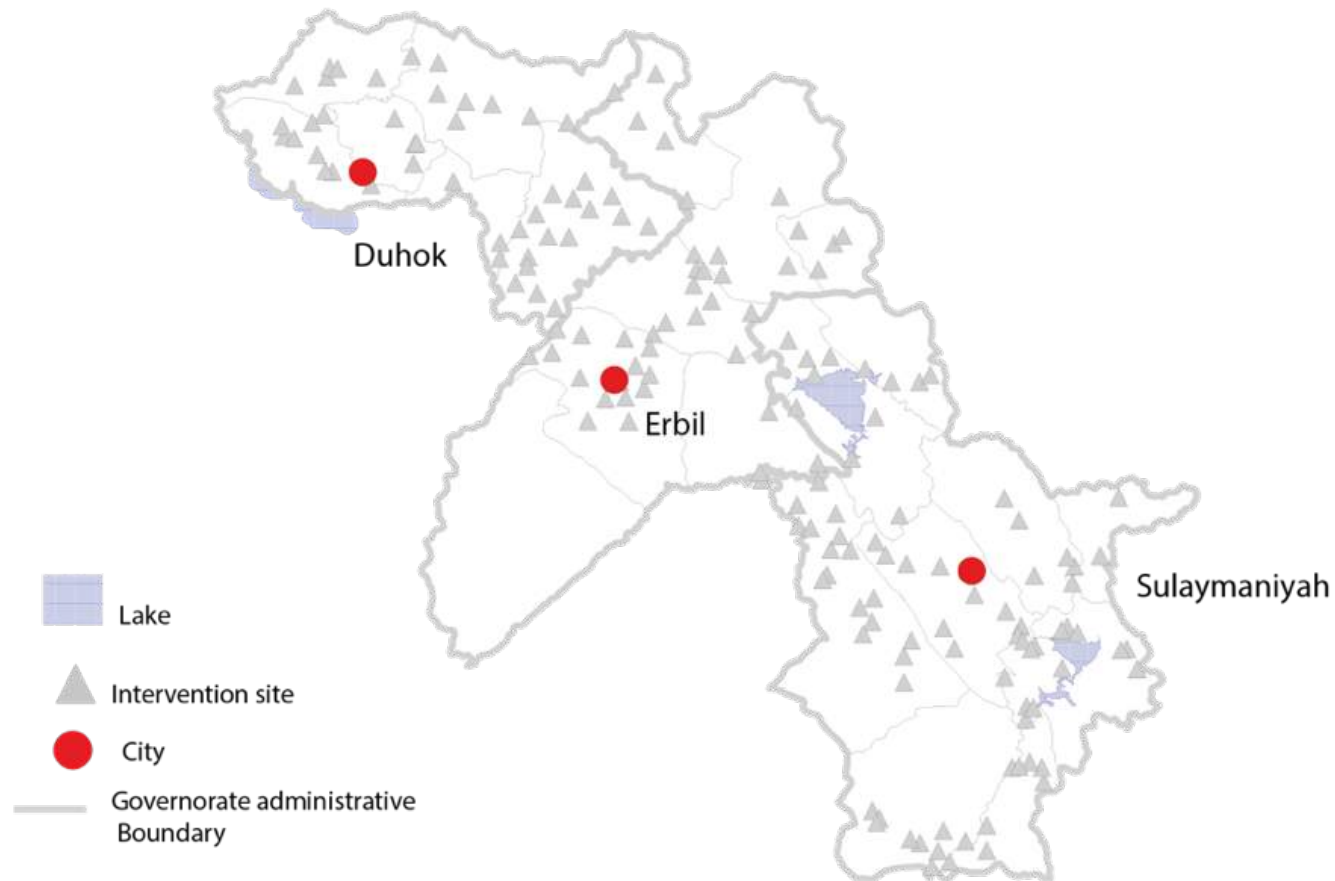
Left: Cuny's Layouts in 1985 in response to Ethiopian refugee influx in Sudan  
Right: Aerial view of one of the camps near Zakho in 1991, the image shows the iron grid layout divided by roads into *bajeer* (settlement), *zanon* (communities) & *gunds* (villages) (Brown, 1995). It is clear the use of the community unit model by Cuny & Intertect.



## Reconstruction & Rehabilitation (1995-2004)

Oil For Food Program (OFFP)

Settlements Rehabilitation Program (SRF)



Map of KR-I, with the surveyed sites and selected for the SRP by UN Habitat. (UN Habitat, 2001).



UNITED NATIONS  
CENTRE FOR HUMAN SETTLEMENTS (Habitat)  
Settlements Rehabilitation Programme – Northern Iraq



*Learning from tradition  
to improve housing design*



Erbil, October 2001



### Rehabilitation (2005-2011)

Advance Development Provincial  
Reconstruction (ADPR)



Left: Daratoo, Kurdistan, Northern Iraq. Collective towns where initially disconnected from main cities; the fast pace of contemporary urbanization, however, is turning them in important urban cores. Photo credit Leo Novel in (Recchia, 2014)

Right: Chamchamal and Shores Collective towns today turning into urban cores. Notice the iron-grid layout still visible. Courtesy to wego.here maps (2020)





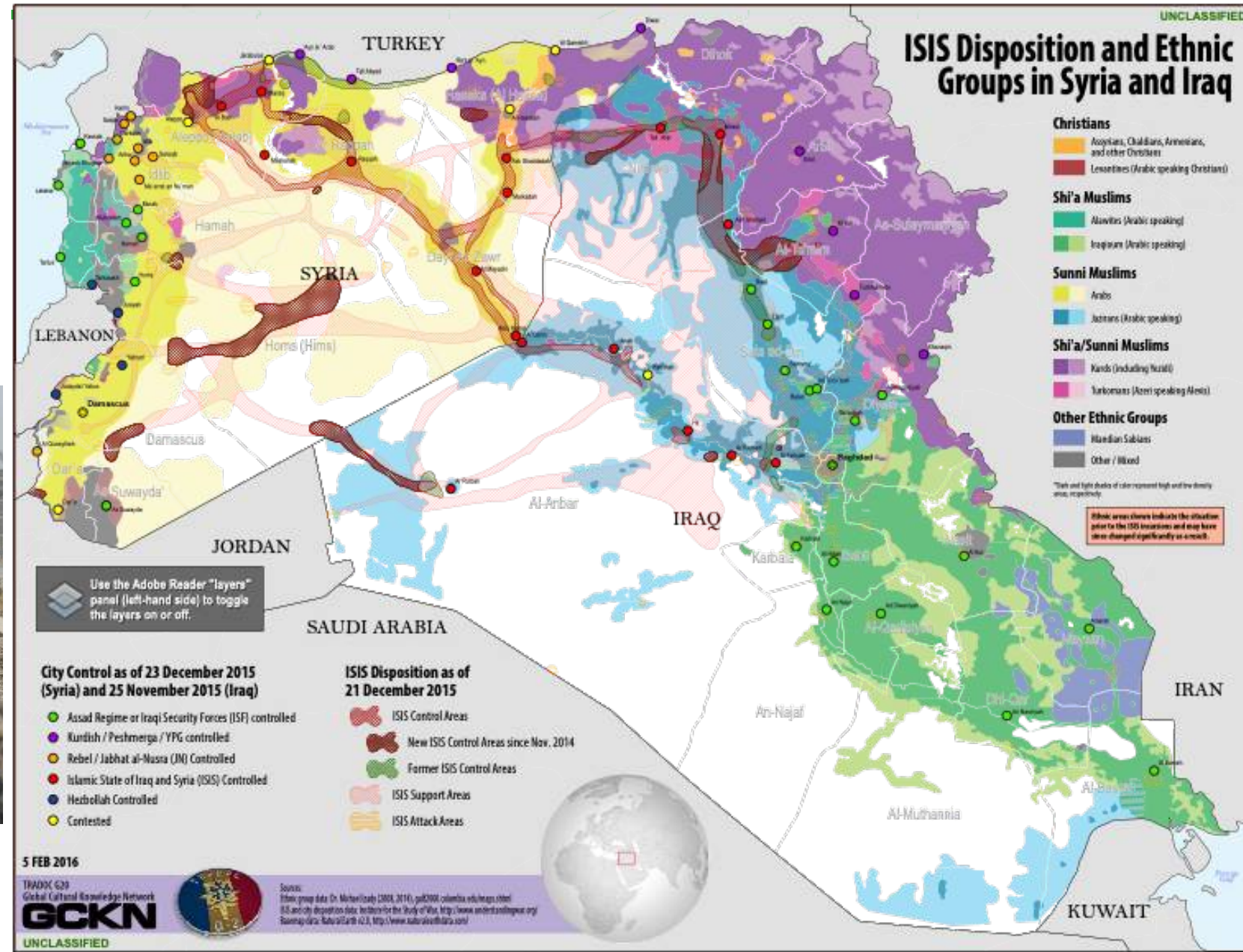
# The “Habitable” becoming “Inhabitable”

# Triggers of Massive Influxes of Forced Displacements since 2011: Syrian Crisis and The ISIL



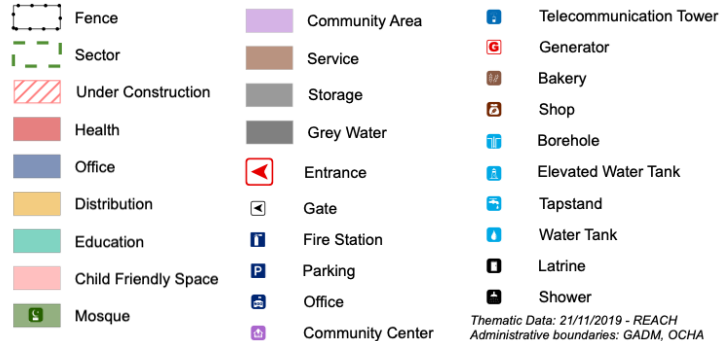
Islamic State of Iraq and Syria (ISIS) Disposition Map in 2016. The map shows the expansion of ISIS control and the concentration of ethnic groups in both Syria and Iraq. U.S. Army Maps (2016)

## The Syrian Crisis and The ISIL - The SA Use for Humanitarian Camps





## Refugee & IDP Camps



The map displays the layout of the Gawilan Refugee Camp in 2019. It features a grid of single blocks, each containing a specific number of plots: Block A (476 Plots), Block B (564 Plots), Block C (252 Plots), Block D (200 Plots), and Block E (343 Plots). The camp is divided into several functional zones, including a central 'Transit Area' and various service areas. Key facilities include schools (Primary, Secondary, and High School), a health center, a woman's center, a community center, a distribution center, a workshop, a bakery, a sports field, a multi-purpose hall, a residence center, and a storage facility. The map also shows the camp's location relative to the surrounding region, including Turkey, Syria, Iraq, Saudi Arabia, and Kuwait. A scale bar indicates a distance of 1:2,450 meters, and a north arrow is provided for orientation.

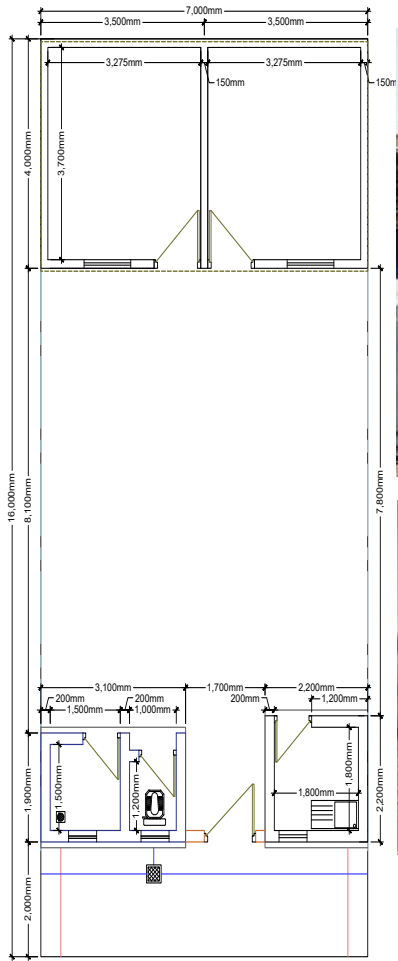
**Layout of Single Block**

Legend:

- Tent
- Kitchen
- Latrine
- Shower



# Refugees Tent Free Camps



Left: The Upgraded Shelter Model. This model used in both refugee camps in KR-I effective since 2015 & implantation by PWJ. The images show the process of provision and self-built. (PWJ, 2019) - Right: Kawergosk Camp, Author 2018



# The Syrian Crisis and The ISIL - The SA Use for Humanitarian Camps

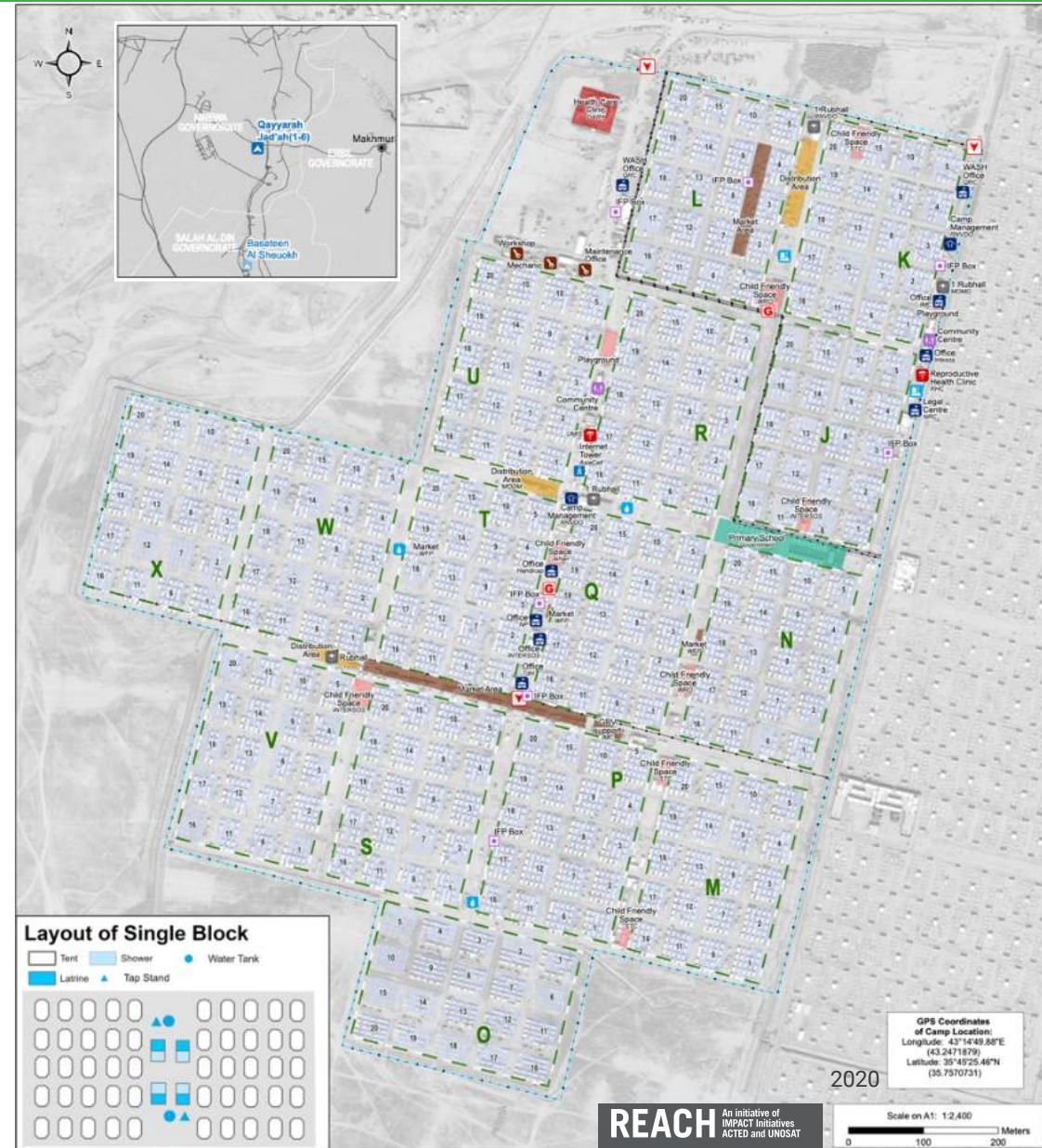
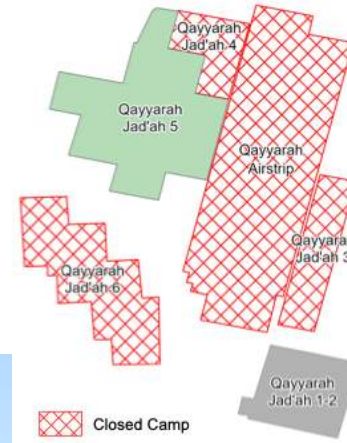
## Spatial Progression

IDPs Camps (waiting for) Closure?



Left: Ashti IDP Camp in 2018.

Right: Qayyarah Jad'ah IDP Camps. On the left graph shows the composition of the IDP Camps in one site. 4 of these sites are closed and tents were 'removed'. Map by (REACH, CCCM, & UNHCR, 2020)





# Spatial Progression

Refugees Camps  
Expansion – Towards  
integration and durable  
solutions



Small Solar Farm Kawergosk Camp (Author-2018).

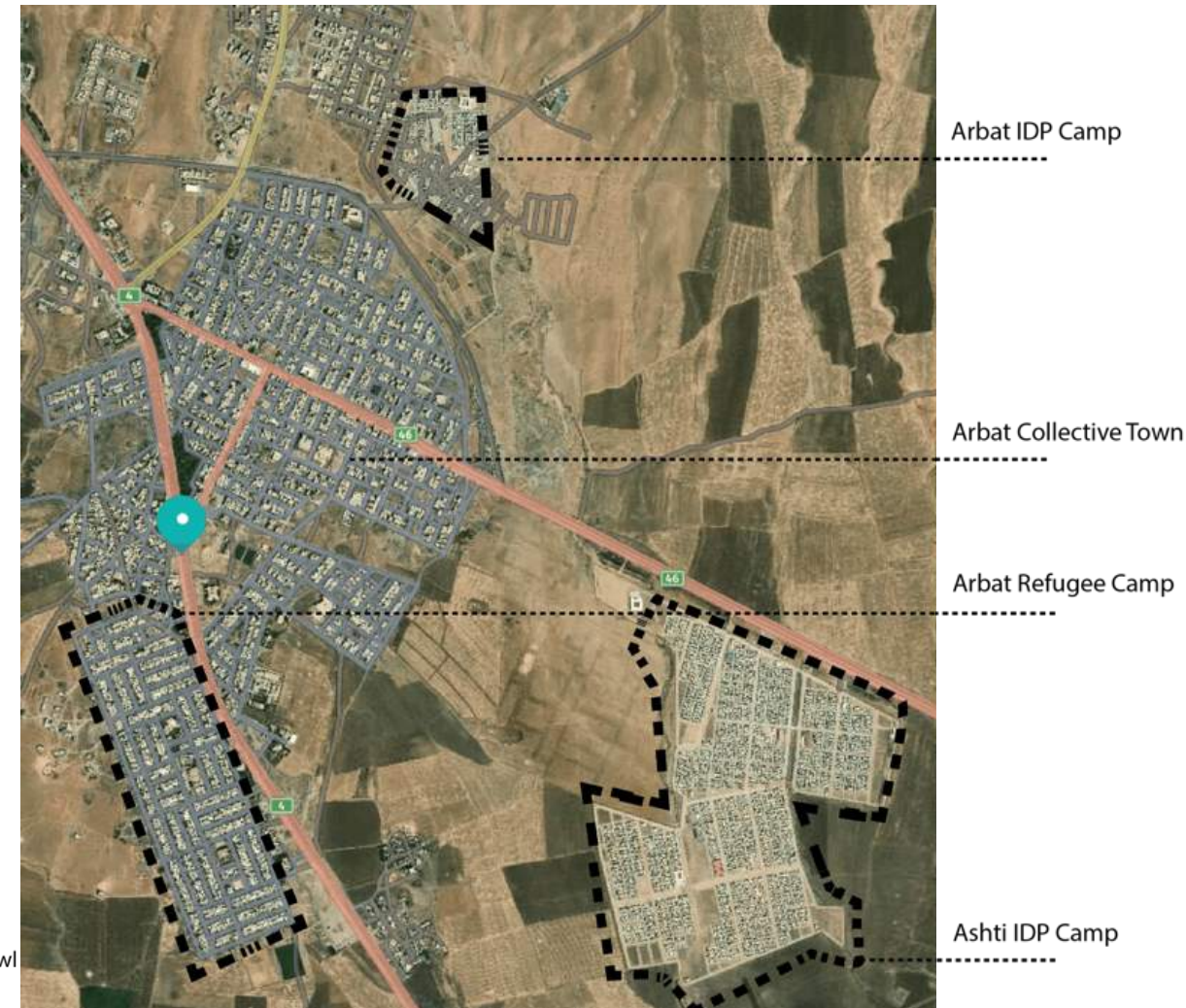
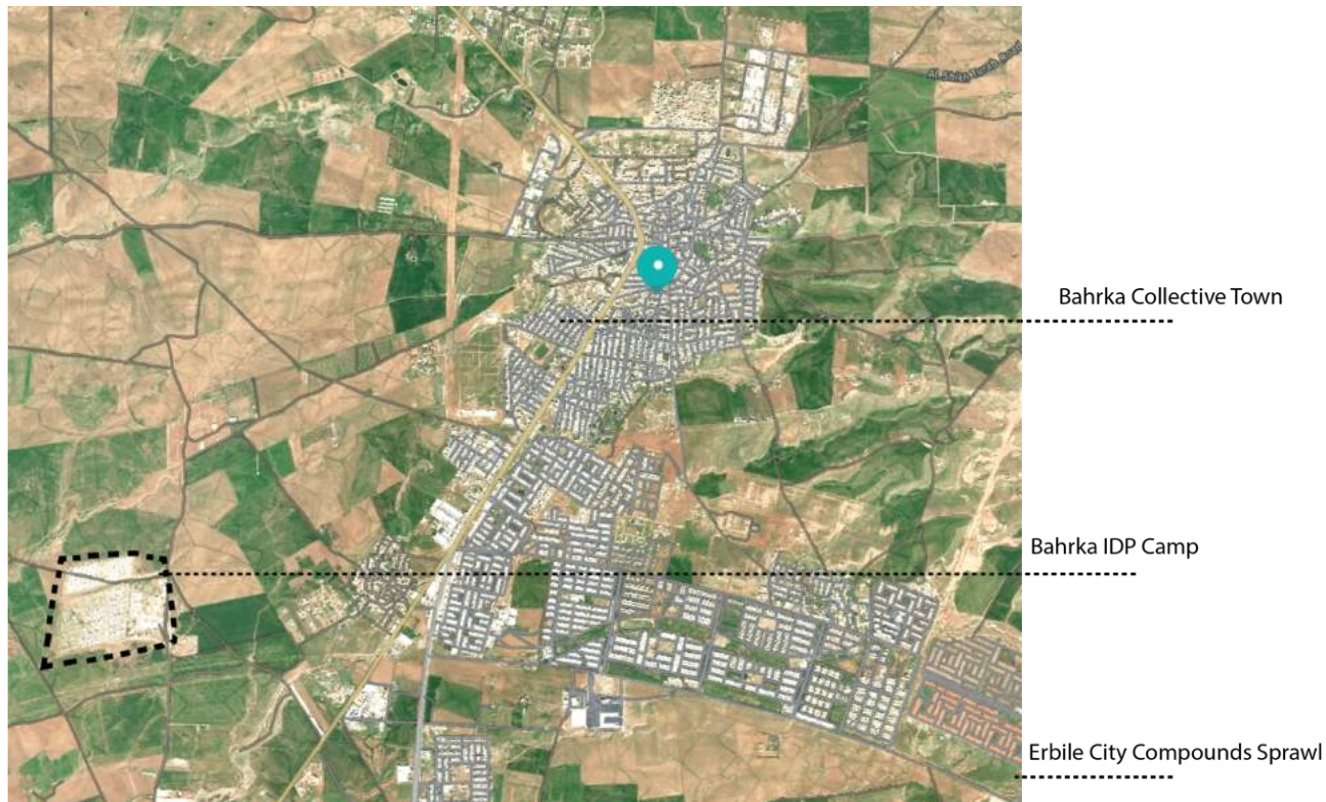


Kawergosk Refugee Camp: Roads Asphalt coating and Camp Expansion (UNHCR 2019)



# Constellations Of Sites of Displacements

Sustainability Between Myth and Potentials ?







**THANK YOU FOR THE ATTENTION!**