

Third Arab Land Conference  
Troisième Conférence Arabe sur le Foncier  
المؤتمر العربي الثالث للأراضي  
18-20 FEBRUARY 2025 • RABAT, MOROCCO



# People-Centered Data: ILC and LANDex

Data Collaboratives and Tools for Resilience in the Arab Region

*Eva Hershaw, Data and Land Monitoring Lead, ILC*



الاراضي العربية  
Arab Land Initiative



GLOBAL  
LAND  
GOVERNANCE  
INDEX



## STRATEGIC OBJECTIVE 2

**PEOPLE'S DATA  
IS PRODUCED  
AND USED TO HOLD  
GOVERNMENTS  
AND CORPORATIONS  
ACCOUNTABLE**

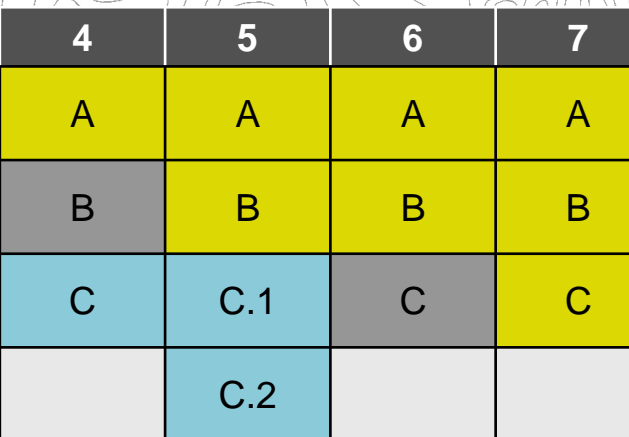
# LANDex

## ➤ Centralising and Generating People-Centred Land Data

The screenshot displays the LANDex website interface. At the top left is the LANDex logo, which includes a stylized topographic map icon and the text "GLOBAL LAND GOVERNANCE INDEX" and "LANDex". To the right of the logo is a search bar with a magnifying glass icon and the word "Search". Below the logo and search bar is a horizontal navigation menu with the following items: "THE LATEST", "VIEW AND USE DATA", "ABOUT", "METHODOLOGY", and "SUBMIT DATA". The main content area features a large blue and white graphic of a globe with a topographic map overlay. A yellow banner with the text "GLOBAL INDEX" is positioned over the globe. To the right of the globe is a search bar with a magnifying glass icon and the text "SEARCH". To the right of the search bar is a black button with the text "LOOK UP A COUNTRY" and a downward-pointing triangle. In the bottom left corner, there are two circular icons: a globe icon with the text "OVERALL LANDEX SCORE" and a female symbol icon with the text "WOMEN'S LAND RIGHTS".

# LANDex

## TYPE OF METHODOLOGY



1	2	3	4	5	6	7	8	9	10
A	A	A	A	A	A	A	A	A	A
B	B.1	B	B	B	B	B	B	B.1	B
C	B.2	C	C	C.1	C	C	C	B.2	C
	C			C.2				C	

18	People-Based Indicators
4	Calculation of National-Level Data
11	Global Data Initiatives

# LANDex

## DATA AND METHODOLOGY SOURCES – PARTNER INITIATIVES

1	2	3	4	5	6	7	8	9	10
		LandMark	LAT	Navigator					
Prindex		LandMark	5.A.1				SOLI	LandMatrix	
Prindex		Prindex	Prindex	Prindex	15.3.1		Transp. Int'l		ALLIED
				LandMark				LandMatrix	

18	People-Based Indicators
4	Calculation of National-Level Data
11	Global Data Initiatives

# LANDex

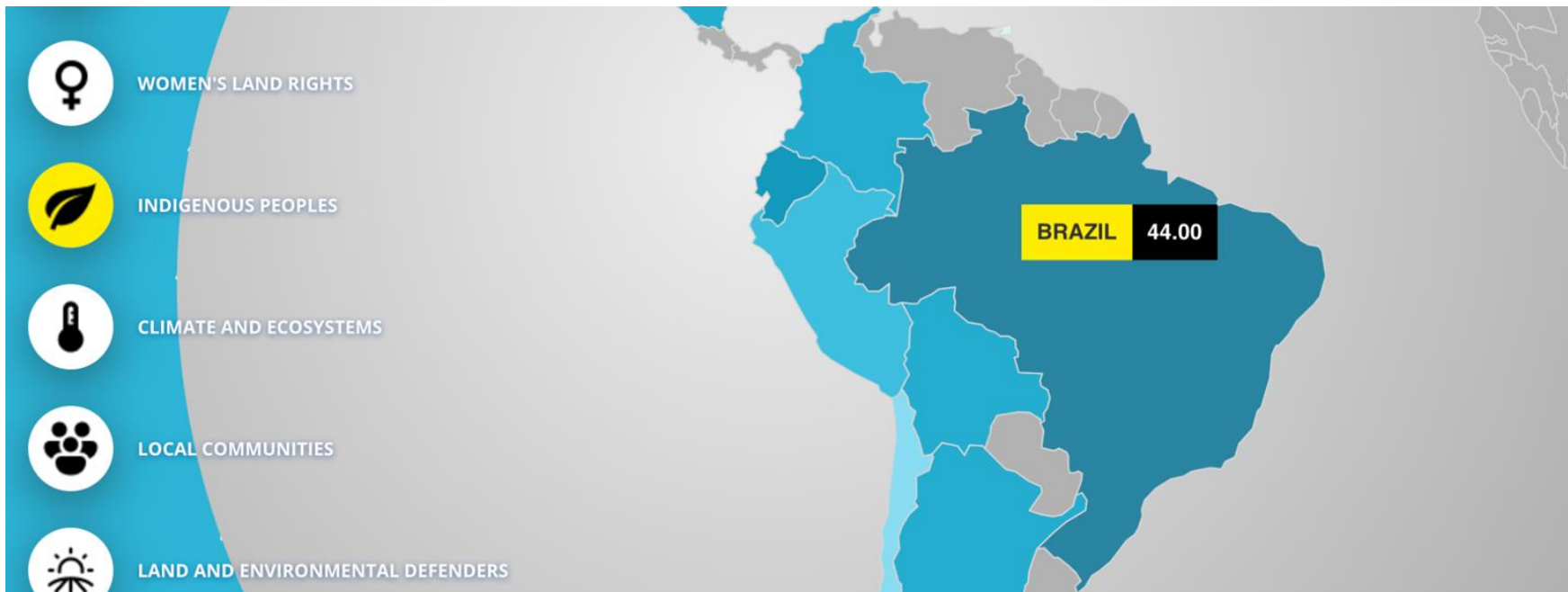
## ALIGNMENT WITH SDG INDICATORS

1	2	3	4	5	6	7	8	9	10
			5.A.2						
1.4.2			5.A.1						
1.4.2		1.4.2	1.4.2	1.4.2	15.3.1				16.10.1

18	People-Based Indicators
4	Calculation of National-Level Data
11	Global Data Initiatives

# Priority Data

## ➤ People's Organisations and Constituency-Based Data



# Evolving Tool

## ➤ In 2024 and 2025: Youth and Rio+ Modules Added



### LOCALLY MANAGED ECOSYSTEMS

- 6A** National legal framework accounts for land tenure in the context of the Rio Conventions
- 6B** Land tenure and stakeholder participation are accounted for in the implementation of the Rio Conventions
- 6C** Secure tenure rights contribute to improved climate, biodiversity, and restoration outcomes

**Block 1: Climate Change**

**Block 2: Biodiversity**

**Block 3: Land Degradation**

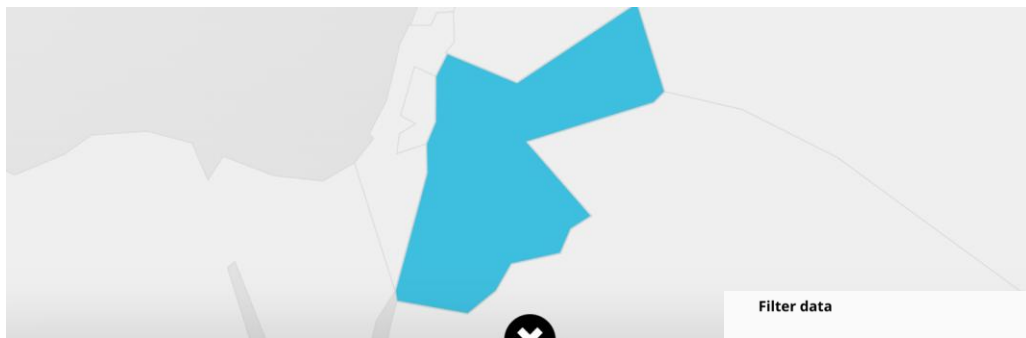
**10: Does your country's National Biodiversity Strategies and Action Plans (NBSAP) include a recognition of customary and collective tenure rights?**

- 0: No, customary and collective tenure rights are not recognised in the NBSAP**
- 1: Partial, there has been limited progress towards recognising customary and collective tenure rights in the NBSAP**



# Facilitating Analysis and Use

## ➤ The Most Relevant Data to Members



**JORDAN**



Area Total 88794

Population Estimated 11439213

**Filter data**

RESET

**REGION**

- Africa
- Latin America and the Caribbean (LAC)
- Asia
- Europe, Middle East and Northern Africa (EMENA)

**COUNTRY**

- Bahrain
- Bangladesh
- Barbados
- Belarus
- Belgium
- Belize
- Benin

**COMMITMENT**

- 1 - Secure Tenure Rights
- 2 - Strong Small-Scale Farming Systems
- 3 - Diverse Tenure Systems
- 4 - Equal Land Rights for Women
- 5 - Secure Territorial Rights for Indigenous People
- 6 - Locally Managed Ecosystems
- 7 - Inclusive Decision Making

**INDICATOR**

- 1A - National legal framework provides for secure tenure rights
- 1B - Rural men and women with documentation
- 1C - Rural men and women who perceive their rights are secure
- 2A - National legal framework supports family farmers
- 2B.1 - Dedicated budget and programs support family farmers
- 2B.2 - Supportive and enabling environment for family farmers
- 2C - Fairable land distribution systems

**DATE FROM**

--- -- --

**DATE TO**

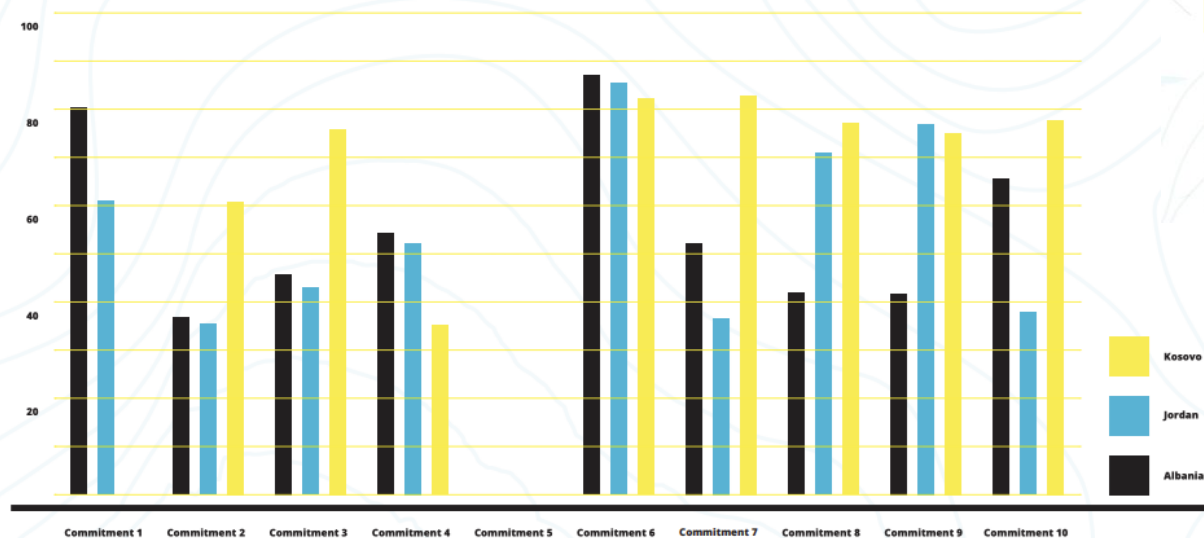
--- -- --

Inclusive Decision Making		AVERAGE	37
-	7A National legal framework promotes inclusive decision-making	SCORE	47
<p>7A is a legal indicator scored through an assessment carried out by the nationally designated legal working group. The 7A score represents the extent to which the legal and institutional framework calls for public participation and input into decision making processes.</p>			
+	7B Rural land use management is based on public input	SCORE	47
		SCORE	16

# Regional Perspectives

## ➤ Trends, Gaps and Opportunities

### FINDINGS IN EMENA



**Women's land rights** continue to represent a challenge in the EMENA region.

The strength of the legal framework to support women's access to land shows room for improvement in all countries, with Albania, Jordan scoring 57, 31 and 64, respectively. As a consequence, effective rat land ownership are low: in Kosovo, only 4.9 percent of agricultural land to be in the hands of women. In Albania, 27 percent of land is in the hands of women, while in Jordan there is no data that allows for such an estimate.

# Data for Accountability

## ➤ Data Leveraged in National, Regional and Global Spaces

### IMPACT

The data generated and identified through LANDex is intended to inform national, regional and global land governance processes, providing evidence-based insights to guide policy reforms

5 GENDER EQUALITY



50.93

SDG 5: GENDER EQUALITY

46.67

SDG 5.A

53.06

SD



ONLY 12% OF FAMILY FARMERS HAVE RECEIVED FINANCIAL SUPPORT

To achieve Gender Equality in Togo, it is crucial to establish policies and support programs that

- ▶ The results of LANDex data analysis indicate that the leg in Togo promote the advancement of women's land right
- ▶ While a LANDex assessment indicates that spousal and consent in Togo is required for land transactions, two th

4 YEARS

FOUR YEARS OF PEOPLE'S DATA ON LAND

WHAT THE LANDex EXPERIENCE HAS TAUGHT US

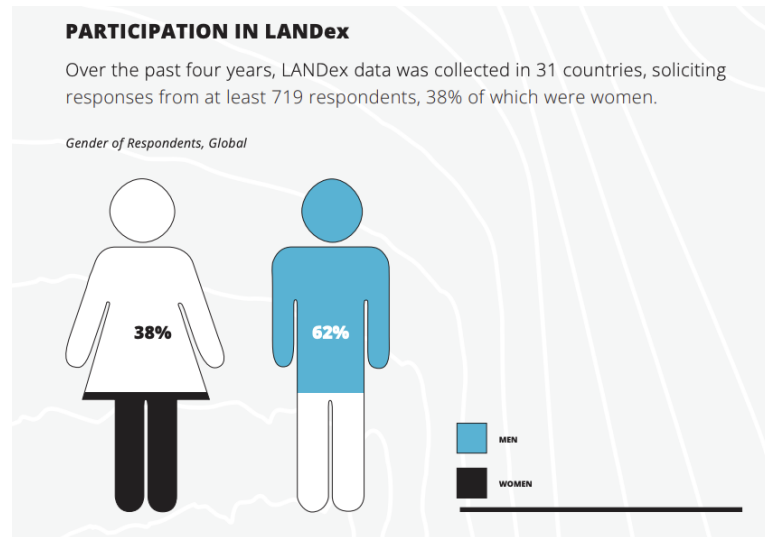
VICTIMS WERE DISPROPORTIONATELY INDIGENOUS,

ONLY 6% OF THE GLOBAL POPULATION IS INDIGENOUS BUT THEY ACCOUNTED FOR NEARLY ONE IN EVERY FOUR ATTACKS (24.2%)

24,2%

# Partnerships for Better Data

- **Across Sectors and Recognizing Mutual Benefits**
- **Growing Recognition for Citizen Data**



# 2025

## ➤ Building on Existing Data Partnerships



# THANK YOU

For more information visit:

[www.landcoalition.org](http://www.landcoalition.org)

[www.landexglobal.org](http://www.landexglobal.org)

or contact:

**Eva Hershaw**

[e.hershaw@landcoalition.org](mailto:e.hershaw@landcoalition.org)

Explore new Rio+ modules:



المملكة المغربية  
ROYAUME DU MAROC



وزارة إعداد التراب الوطني والتعمير  
والإسكان وسياسة المدينة

ROYAUME DU MAROC  
MINISTRE DE L'AMÉNAGEMENT DU TERRITOIRE NATIONAL  
DE L'URBANISME, DE L'HABITAT ET DE LA POLITIQUE DE LA VILLE



الاراضي العربية  
Arab Land Initiative



INTERNATIONAL  
**LAND**  
COALITION



GLOBAL  
LAND  
GOVERNANCE  
INDEX